

**PHILIPS**

Ultrasound

Lumify



## An exciting breakthrough in **point-of-care** imaging technology

Our transducers and mobile app incorporate decades of expertise and innovation in ultrasound imaging to help you make informed decisions.



### Curved array

#### **C5-2 broadband curved array**

- Automatically optimized focal zone based on preset focal zone
- Continuous dynamic receive focusing
- 128 elements
- 5 to 2 MHz extended operating frequency range
- 67.5° field of view
- High-resolution imaging for abdomen, gallbladder, lung, and Ob/Gyn applications
- Supports 2D, color Doppler, and Tissue Harmonic Imaging
- Lightweight replaceable USB cable



### Linear array

#### **L12-4 broadband linear array**

- Automatically adjusted focal zone based on preset focal zone
- Continuous dynamic receive focusing
- 128 elements
- 4 to 12 MHz extended operating frequency range
- 34.5 mm field of view
- High resolution imaging for lung, musculoskeletal, soft tissue, superficial, and vascular applications
- Supports 2D, color Doppler, and Tissue Harmonic Imaging
- Lightweight replaceable USB cable



### Sector array

#### **S4-1 broadband sector/phased array**

- Automatically adjusted focal zone based on preset focal zone
- Continuous dynamic receive focusing
- 64 elements
- 1 to 4 MHz extended operating frequency range
- 90° field of view
- High resolution imaging for lung, echo, abdominal, Ob/Gyn, FAST applications
- Supports 2D, color Doppler, and Tissue Harmonic Imaging
- Lightweight replaceable USB cable

Bring the technology directly to your patients when it's needed, for faster diagnosis and treatment.

- 1 **Download**  
the Lumify app to your smart device.\*
- 2 **Connect**  
the Lumify transducer to your compatible smart device.
- 3 **Scan**  
with the exceptional quality of Philips imaging technology.



\* Visit the Lumify portal and click on the "Support" tab for the list of compatible smart device options: [www.philips.ca/healthcare/sites/lumify/](http://www.philips.ca/healthcare/sites/lumify/)

## Transducer application guide



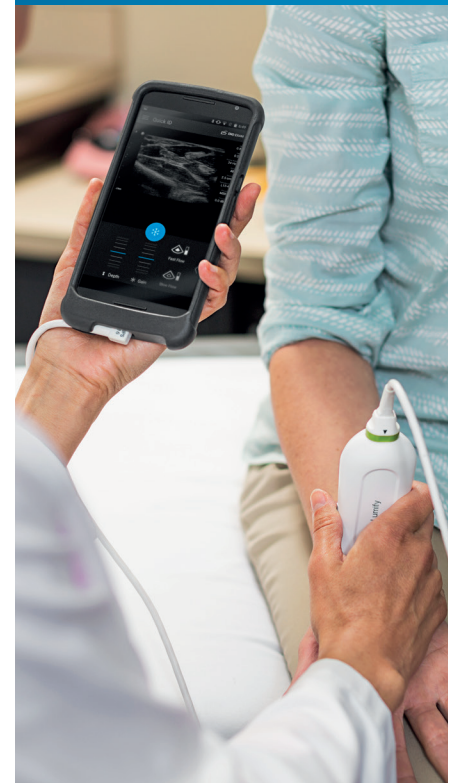
Transducer		C5-2	L12-4	S4-1
Type of array		Curved	Linear	Sector
Application				
<b>Abdominal</b>	0-4 cm			•
	5-10 cm			•
	> 11 cm	•		•
	Gallbladder	•		•
	Lung	•	•	•
<b>Gynecology</b>	Transabdominal < 10 cm	•		•
	Transabdominal > 11 cm	•		•
<b>Obstetrics</b>	1st trimester 10-12 cm	•		•
	2nd trimester 12-18 cm	•		•
	3rd trimester 15-20 cm	•		•
<b>Echo</b>				•
<b>Vascular</b>	0-3 cm	•		
	3-8 cm	•		
<b>Musculoskeletal</b>			•	
<b>Superficial</b>			•	
<b>Vascular</b>			•	
<b>Soft tissue</b>			•	
<b>FAST</b>				•

Philips Lumify offers quality imaging and flexibility with three transducers:

- C5-2 broadband curved array
- L12-4 broadband linear array
- S4-1 broadband phased array

For more information about the flexibility, simplicity, and image quality of Lumify, visit:

[www.philips.ca/healthcare/sites/lumify/](http://www.philips.ca/healthcare/sites/lumify/)



© 2019 Koninklijke Philips N.V. All rights reserved. Philips reserves the right to make changes in specifications and/or to discontinue any product at any time without notice or obligation and will not be liable for any consequences resulting from the use of this publication. Trademarks are the property of Koninklijke Philips N.V. or their respective owners.

